


KAESER
COMPRESSORS®



MOBILAIR® Range for non-regulated markets

Portable compressors with the world-renowned SIGMA PROFILE 
Delivery volume 1.2 to 48.1 m³/min

www.kaeser.com

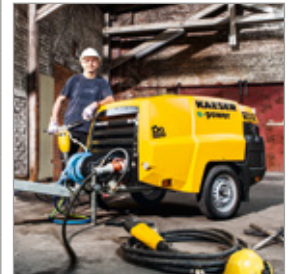
Alternative drives

Model			e-power		
			M 13	M 17	M 13E
Flow rate at working pressure	7 bar	m³/min	1.2	1.6	1.25
	100 psi	cfm	42	57	44
	10 bar	m³/min	1.0	-	1.0
	145 psi	cfm	35		35
	13 bar	m³/min	0.85	-	0.85
	175 psi	cfm	30		30
	15 bar	m³/min	-	1.0	0.75
	200 psi	cfm		35	27
Engine / motor			Honda GX 630	Honda GX 630	Siemens
Rated engine / motor power		kW	15.5	15.5	7.5
Compressed air treatment			○	○	○



Compact machines

Model							e-power						
							M 20	M 27	M 31	M 50	M 27E	M 31E	M 50E
Flow rate at working pressure	7 bar	m³/min	2.0	2.6	3.15	5.0	2.6	3.15	5.0	2.6	3.15	5.0	
	100 psi	cfm	71	92	110	180	92	110	180	92	110	180	
	10 bar	m³/min	-	2.1	2.6	-	-	2.6	3.8				
	145 psi	cfm		74	92			92	135				
	12 bar	m³/min	-	1.9	2.3	-	-	2.3	-				
	175 psi	cfm		67	81			81	-				
	14 bar	m³/min	-	1.6	1.9	-	-	1.9	-				
	200 psi	cfm		57	67			67	-				
Engine / motor			Kubota D722	Kubota D1105	Kubota D1105T	Kubota V1505T	Siemens	Siemens	Siemens				
Rated engine / motor power		kW	14.7	18.2	23.7	32.5	15	22	25				
Compressed air treatment			○	○	○	○	○	○	○				
Generator option		kVA	-	6.5	6.5	-	-	-	-				



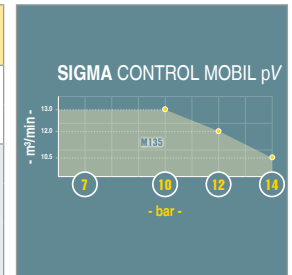
Maximum versatility

Model			M 57	M 57utility	M 70	M 100
Flow rate at working pressure	7 bar	m³/min	5.6	5.4	7.0	10.6
	100 psi	cfm	200	190	250	375
	10 bar	m³/min	-	4.7	5.4	8.5
	145 psi	cfm		165	190	300
	12 bar	m³/min	-	-	-	7.2
	175 psi	cfm				255
	14 bar	m³/min	-	-	-	6.4
	200 psi	cfm				225
Engine			Kubota V2403	Kubota V2403	Kubota V2003T	Kubota V3800 Di-T
Rated engine power		kW	36	36	43.3	71.7
Compressed air treatment			-	○	○	○
Generator option		kVA	-	-	-	8.5 / 13



Power packages

Model			M 120	M 135
Flow rate at working pressure	8.6 bar	m³/min	12.2	-
	125 psi	cfm	430	
	10 bar	m³/min	11.6	13.0
	145 psi	cfm	410	460
	12 bar	m³/min	-	12.0
	175 psi	cfm	-	425
	14 bar	m³/min	10.2	10.5
	200 psi	cfm	360	370
Engine			Cummins QSF 3.8	Deutz TCD 2013 L04
Rated engine power		kW	97	122
Compressed air treatment			○	○
Generator option		kVA	-	-



Large compressors

					e-power	
Model			M 235	M 450	M 250E	M 255E
Flow rate at working pressure	8.6 bar	m³/min	23.3	48.1	25.0	-
	125 psi	cfm	825	1700	885	
	10 bar	m³/min	22.6	44.6	20.4	24.7
	145 psi	cfm	800	1575	720	875
	12 bar	m³/min	19.8	-	-	19.9
	175 psi	cfm	700	-	-	705
	14 bar	m³/min	18.1	37.7	16.2	-
	200 psi	cfm	640	1330	570	-
Engine / motor			Cummins QSB 6.7	Mercedes-Benz OM 460 LA	Siemens	Siemens
Rated engine / motor power		kW	201	348	132	160
Compressed air treatment			○	○	○	○

